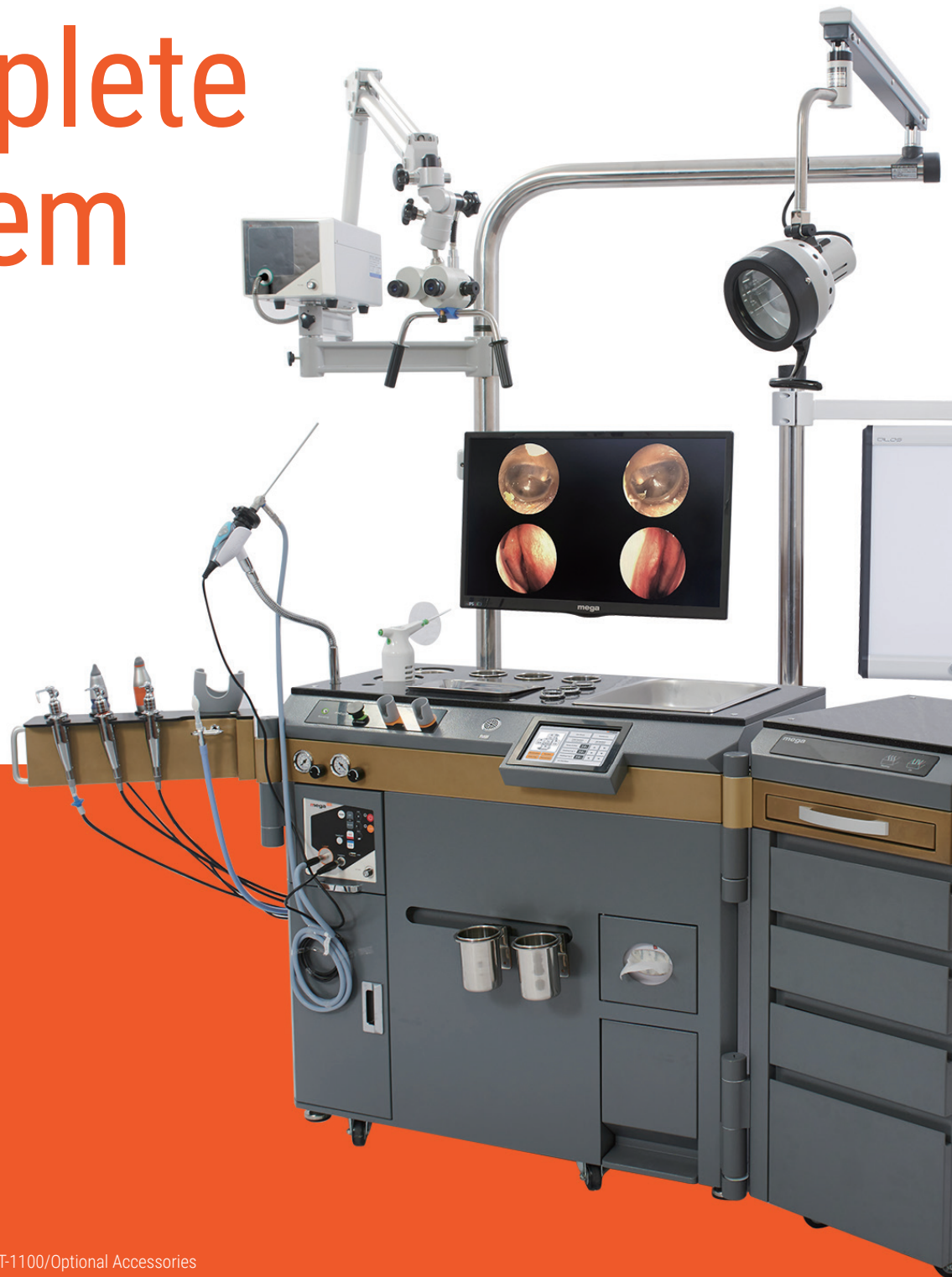


# ENT UNIT Complete System



ENT UNIT

NET-4000/NET-3000A/NET-600A/NET-1100/Optional Accessories

ENT Endoscopy Visual System

VS-3CL/VS-DUAL/NET-260SLCB/Optional Accessories

ENT Chair

NET-1500

We Do Your ENT **mega**  
MEDICAL

# ENT UNIT NET-4000



## Features

- LCD Touch Screen
- Suction Hose Rinsing System (Option)
- Built-in Endoscope Holder with UV Sterilizer
- Built-in Endoscope Liquid Sterilizer
- Pivotal Instrument Cabinet
- Central Water Supply and Auto Drainage System (Option)

## Specifications

|                   |  |
|-------------------|--|
| Compressor Pump   | 0.9~3.0kg/cm <sup>2</sup>                |
| Vacuum Pump       | above 500mmHg                            |
| Suction Bottle    | 2,500cc                                  |
| Anti-Fog Device   | working time: 15 sec                     |
| Power Consumption | 490VA                                    |
| Operating Voltage | AC 230V (single-phase three wire system) |
| Frequency         | 50/60Hz                                  |
| Suction Rate      | Min. 2,000 cc /m                         |
| Spray Rate        | Min. 5 cc /m                             |
| Weight            | 180kg                                    |
| Dimension (mm)    | 1,773(W) x 677(D) x 1,213(H)             |
| ESL               | 10 years (Motor life time)               |



Adjustable Valve for Pressure of Suction and Spray with Gauge



Suction Hose Rinsing System



Pivotal Arm



Endoscope Holder with UV Sterilizer

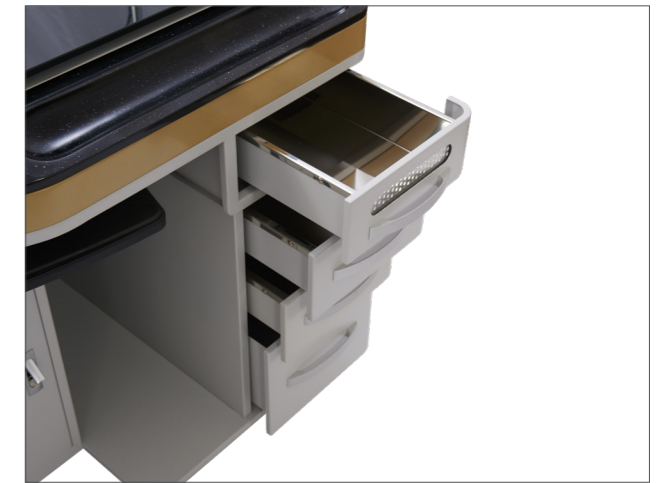
## Standard Accessories

|   |   |
|---|---|
| Straight Sprayer                          | 2 |
| Curved Sprayer                            | 1 |
| Suction Unit                              | 1 |
| Pressure Gauge (Sprayer, Suction)         | 2 |
| Stainless Cups                            | 2 |
| Heating Cup                               | 2 |
| Gauze Container                           | 2 |
| Control Keypad(LCD Touch)                 | 1 |
| UV Endoscope Sterilizer                   | 2 |
| Endoscope Holder for Liquid Sterilization | 3 |
| Ear Dryer                                 | 1 |
| Eustacure                                 | 1 |
| Anti-Fog                                  | 1 |
| Bin(Waste Basket)                         | 1 |
| Tissue Container                          | 1 |
| Camera Holder                             | 1 |
| Instrument Tray                           | 2 |
| Instrument Cabinet                        | 1 |
| -4 step Drawers                           |   |
| -Heating Drawers                          |   |
| -UV Sterilizer Drawers                    |   |
| -Chart Table                              |   |

## Optional Accessories

|                                   |                      |
|-----------------------------------|----------------------|
| Endoscopy Visual System           | View Box             |
| Monitor                           | Powder Sprayer       |
| Endoscope                         | Endoscope Sterilizer |
| Microscope                        | Wireless Head Light  |
| CWS & ADS                         | Patient Chair        |
| Suction Hose Rinsing System       | Doctor's Stool Chair |
| Ear Irrigation Bottle with Funnel | Medicine Bottle      |
| Illumination                      |                      |

# NET-3000A



### Features

- Full-scale Luxury ENT Unit
- 2 Suction Units & 4 Sprayers
- Exclusive Space for PC and Keyboard
- Central Water Supply and Auto Drainage System (Option)

### Specifications

|                   |                                  |
|-------------------|----------------------------------|
| Compressor Pump   | 0.9~3.0kg/cm <sup>2</sup>        |
| Vacuum Pump       | above 500mmHg                    |
| Suction Bottle    | 2,500cc                          |
| Anti-Fog Device   | working time: 15sec              |
| Power Consumption | 490VA                            |
| Operating Voltage | 1100/220V                        |
| Frequency         | 50/60Hz                          |
| Suction Rate      | Min. 2,000 cc /m                 |
| Spray Rate        | Min. 5 cc /m                     |
| Weight            | 250kg ± 10%                      |
| Dimension (mm)    | 1,908(W) X 708(D) X 785(H) ± 10% |
| ESL               | 10 years (Motor life time)       |

### Standard Accessories

|                                       |    |
|---------------------------------------|----|
| Straight Sprayer                      | 3  |
| Curved Sprayer                        | 1  |
| Suction Unit                          | 2  |
| Stainless Cups                        | 9  |
| Gauze Container                       | 4  |
| Medicine Bottle                       | 14 |
| Instrument Container w/ UV Sterilizer | 1  |
| Anti-Fog                              | 1  |
| Bin(Waste Basket)                     | 1  |
| Keyboard Tray                         | 1  |
| Tissue Container                      | 1  |
| Camera Holder                         | 1  |
| Instrument Tray                       | 1  |
| Pen Light                             | 1  |

### Optional Accessories

|                                 |                                 |
|---------------------------------|---------------------------------|
| Endoscopy Visual System Monitor | Operating Otoscope Illumination |
| Endoscope                       | View Box                        |
| Microscope                      | Powder Sprayer                  |
| CWS & ADS                       | Endoscope Sterilizer            |
| Ear Irrigation System           | Wireless Head Light             |
| Heating Cup                     | Instrument Container w/ Heating |
| Ear Dryer                       | Patient Chair                   |
| Eustacure                       | Doctor's Stool Chair            |

## ENT UNIT NET-600A



### Features

- Cost Effective Mid-size ENT Unit
- 2 Separate Suction Units
- Central Water Supply and Auto Drainage System

### Specifications

|                   |  |
|-------------------|--|
| Compressor Pump   | 0.9~3.0kg/cm <sup>2</sup>  |
| Vacuum Pump       | above 500mmHg  |
| Suction Bottle    | 2,500cc  |
| Anti-Fog Device   | working time: 10 sec   |
| Power Consumption | 490VA  |
| Operating Voltage | AC 230V (single-phase three wire system)   |
| Frequency         | 50/60Hz  |
| Suction Rate      | Min. 2,000 cc /m   |
| Spray Rate        | Min. 5 cc /m   |
| Weight            | 130kg  |
| Dimension (mm)    | Main Unit :<br>1,295(W) X 445(D) X 865(H) ± 10%<br>Chart Table :<br>435(W) X 445(D) X 865(H) ± 10% |
| ESL               | 10 years (Motor life time)   |

### Standard Accessories

|                   |   |
|-------------------|---|
| Straight Sprayer  | 3 |
| Suction Unit      | 2 |
| Stainless Cups    | 2 |
| Heating Cup       | 1 |
| Gauze Container   | 2 |
| Medicine Bottle   | 4 |
| Anti-Fog          | 1 |
| Bin(Waste Basket) | 1 |
| Camera Holder     | 1 |
| Instrument Tray   | 1 |
| Pen Light         | 1 |

### Optional Accessories

|                         |                           |
|-------------------------|---------------------------|
| Chart Table             | Operating Otolaryngoscope |
| Endoscopy Visual System | Illumination              |
| Monitor                 | View Box                  |
| Endoscope               | Powder Sprayer            |
| Microscope              | Endoscope Sterilizer      |
| CWS & ADS               | Wireless Head Light       |
| Ear Irrigation System   | Patient Chair             |
| Ear Dryer               | Doctor's Stool Chair      |
| Eustacure               |                           |

## ENT UNIT NET-1100



Instrument Cart

### Features

- Compact Size ENT Unit
- Enhanced Mobility
- Instrument Cart Attachable (Option)

### Specifications

|                   |  |
|-------------------|--|
| Compressor Pump   | 0.9~3.0kg/cm <sup>2</sup>  |
| Vacuum Pump       | above 500mmHg  |
| Suction Bottle    | 2,500cc  |
| Anti-Fog Device   | working time: 10 sec   |
| Power Consumption | 413VA  |
| Operating Voltage | AC 230V (single-phase three wire system)                           |
| Frequency         | 50/60Hz  |
| Suction Rate      | Min. 2,000 cc /m   |
| Spray Rate        | Min. 5 cc /m   |
| Weight            | 50kg   |
| Dimension (mm)    | Main: 760(W) X 620(D) X 1,070(H)<br>Cart: 500(W) X 500(D) X 975(H) |
| ESL               | 10 years (Motor life time)   |

### Standard Accessories

|                  |   |
|------------------|---|
| Straight Sprayer | 2 |
| Suction Unit     | 1 |
| Stainless Cups   | 2 |
| Heating Cup      | 1 |
| Gauze Container  | 2 |
| Medicine Bottle  | 2 |
| Anti-Fog         | 1 |
| Instrument Tray  | 2 |

### Optional Accessories

|                                   |                           |
|-----------------------------------|---------------------------|
| Instrument Cart                   | Eustacure                 |
| Endoscopy Visual System           | Pen Light                 |
| Monitor                           | Operating Otolaryngoscope |
| Endoscope                         | Endoscope Sterilizer      |
| Microscope (Stand Type)           | Wireless Head Light       |
| Ear Irrigation Bottle with Funnel | Patient Chair             |
| Powder Sprayer                    | Doctor's Stool Chair      |
| Ear Dryer                         |                           |

# Optional Accessories



Ear Irrigation Kit



Operating Otoscope



Medical Monitor



Endoscope Sterilizer



Wireless Head Light



View Box



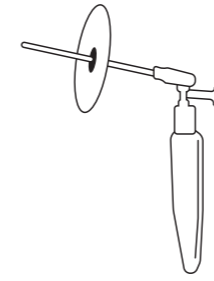
Powder Sprayer



Eustacure



Ear Dryer



CWS & ADS



Disposable Suction Tip



Disposable Spray Tip



Microscope



Illumination



Pen Light



Portable Pen Light



Consumable parts for Suction Gun



Doctor's Stool Chair

# ENT Endoscopy Visual System VS-3CL



## Features

- Specialized in ENT Surgery using the 3CMOS Visual System
- High Quality LED Light Source
- Light Source CCT 6000K, CRI 90
- Variable Light Intensity

## Specifications

|                   |  |
|-------------------|--|
| Image Sensor      | 1/3" 3CMOS FHD   |
| Lens              | 15~25mm C-mount  |
| Scan Type         | Progressive scan   |
| Image Resolution  | 1,920 x 1,080  |
| Aspect Ratio      | 16:9   |
| Capture Mode      | 1/AVI  |
| Frame Rate        | 60p  |
| Recording Media   | USB memory, SD-CARD  |
| Video Output      | HD-SDI (2Port), DVI (1Port)  |
| Voltage           | 110-230V   |
| Frequency         | 50/60Hz  |
| Power Consumption | Camera: Approx. 50W,<br>Light Source: Approx. 70W  |
| Weight            | <b>Main Body &amp; Light Source :</b> Approx. 3kg<br><b>Camera :</b> Approx. 100g  |
| Dimension         | <b>Main Body &amp; Light Source :</b><br>260mm (W) x 270mm (D) x 71mm (H) ± 10 %<br><b>Camera :</b><br>49mm(W) x 131mm(D) ± 10 % |

## Standard Accessories

|                      |   |
|----------------------|---|
| 3CMOS Full-HD Camera | 1 |
| 3 Way Foot Switch    | 1 |
| Light Guide          | 1 |
| Video Cable          | 1 |
| Power Cord           | 1 |

## Optional Accessories

Medical Monitor  
Monitor Holder  
Cart  
Camera Holder  
Endoscope

# ENT Endoscopy Visual System VS-DUAL



## Features

- Auto Change Channel System
- AWB (Auto White Balance) Function
- MWB (Manual White Balance) Mode
- IRIS 21 STEPS
- AGC ( Auto Gain Control) Function (on/off/up)
- SHARP 10 Steps
- DNR (Digital Noise Reduction) 11 Steps
- Black 10 Steps
- HUE 10 Steps
- LUXSEN Function (on/off)
- USB Memory

## Specifications

|                   | FHD              | HD                                       |
|-------------------|------------------|--|
| Image Sensor      | 1/3" CMOS FHD    | 1/3" CMOS HD                             |
| Scan Type         | Progressive Scan |  |
| Image Resolution  | 1,920 x 1,080    | 1,280 x 720                              |
| Capture Mode      | 1/ 2/ 4/ AVI     |  |
| Aspect Ratio      | 16:9             |  |
| Resolution (H)    | 1000TVL          | 800TVL                                   |
| Video Output      | HDMI (2ports)    |  |
| Voltage           | 220V             |  |
| Frequency         | 50/60Hz          |  |
| Power Consumption | 120VA            |  |
| Weight            | Main Body        | Approx. 6.5kg                            |
|                   | Camera           | Approx. 300g                             |
| Dimension         | Main Body        | 325mm (L) x 373mm (D) x 150mm (H) ± 10 % |
|                   | Camera           | 55mm(W) x 120mm(D) x 55mm (H) ± 10 %     |

## Attached to ENT Unit



## Standard Accessories

|                   |   |
|-------------------|---|
| Camera (FHD / HD) | 2 |
| Foot Switch       | 1 |
| Light Guide       | 1 |
| Video Cable       | 1 |
| S-Video Cable     | 1 |
| Power Cord        | 1 |

## Optional Accessories

Medical Monitor  
Monitor Holder  
Customized Shelf  
Cart  
Camera Holder  
Endoscope

# NET-260SLCB

FHD



HD



SD



## Features

### FHD / HD

- Attachable to ENT Unit
- Auto Change Channel System
- AWB (Auto White Balance) Function
- MWB(Manual White Balance) Mode
- IRIS 21 STEPS
- AGC (Auto Gain Control) Function (on/off/up)
- SHARP 10 Steps
- DNR (Digital Noise Reduction)11 Steps
- Black 10 Steps
- HUE 10 Steps
- LUXSEN Function (on/off)
- USB Memory

### SD

- Attachable to ENT Unit
- AWB (Auto White Balance) Function
- AGC(Auto Gain Control) Function(on/off/up)
- Auto Color Modification
- USB Memory

## Specifications

|                         | FHD              | HD                            | SD                 |
|-------------------------|------------------|-------------------------------|--------------------|
| Image Sensor            | 1/3" CMOS FHD    | 1/3" CMOS HD                  | 1/3" CCD Super HAD |
| Scan Type               | Progressive Scan |                               | Interlaced Scan    |
| Image Resolution        | 1,920 x 1,080    | 1,280 x 720                   | 976 x 494          |
| Capture Mode            | 1/ 2/ 4/ AVI     |                               |                    |
| Resolution (H)          | 1000TVL          | 800TVL                        | 670TVL             |
| Video Output            | HDMI (2ports)    |                               | HDMI               |
| Voltage                 | 220V             |                               |                    |
| Frequency               | 50/60Hz          |                               |                    |
| Power Consumption       | 310mA / +6V      | 120VA                         | 270VA              |
| Weight                  | Main Body        | Approx. 4kg                   |                    |
|                         | Camera           | Approx. 220g                  |                    |
| Dimension               | Main Body        | 165(W) x 326(D) x 145(H) mm   |                    |
|                         | Camera           | 46(W) x 127.4(D) x 55.6(H) mm |                    |
| PC Connection           | 0                | 0                             | X                  |
| USB Still Image Capture | 0                | 0                             | 0                  |
| USB Video Recording     | 0                | 0                             | X                  |

## Standard Accessories

|                        |   |
|------------------------|---|
| Camera (FHD / HD / SD) | 1 |
| Foot Switch            | 1 |
| Light Guide            | 1 |
| Video Cable            | 1 |
| S-Video Cable          | 1 |
| Power Cord             | 1 |

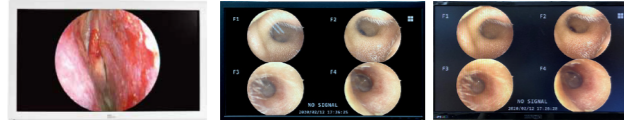
## Optional Accessories

- Medical Monitor
- Monitor Holder
- Camera Holder
- Endoscope

# Optional Accessories

## Monitor

| Model       | 27"     | 23.8"     | 24"       |
|-------------|---------|-----------|-----------|
| Application | Surgery | Diagnosis | Diagnosis |



## Flexible Nasopharyngoscope

| Model          | NET-300NS    | NET-340NS    |
|----------------|--------------|--------------|
| Diameter       | 2.8mm        | 3.4mm        |
| Working Length | 300mm        | 300mm        |
| Angle of View  | 70°          | 70°          |
| Bending        | up/down 150° | up/down 150° |



## Endoscope

| Category        | Specification     | Standard | RLP |
|-----------------|-------------------|----------|-----|
| Otoscope        | 0°, 3.0mm, 60mm   | 0        | X   |
| Otoscope        | 0°, 3.0mm, 90mm   | 0        | X   |
| Otoscope        | 0°, 2.7mm, 110mm  | 0        | X   |
| Otoscope        | 0°, 4.0mm, 50mm   | 0        | X   |
| Sinoscope       | 0°, 4.0mm, 175mm  | 0        | X   |
| Sinoscope       | 30°, 4.0mm, 175mm | 0        | 0   |
| Sinoscope       | 70°, 4.0mm, 175mm | 0        | 0   |
| Laryngoscope    | 70°, 5.0mm, 175mm | 0        | 0   |
| Laryngoscope    | 90°, 8.0mm, 175mm | 0        | 0   |
| HD Otoscope     | 0°, 4.0mm, 185mm  | 0        | X   |
| HD Sinoscope    | 30°, 4.0mm, 185mm | 0        | 0   |
| HD Sinoscope    | 45°, 4.0mm, 185mm | 0        | 0   |
| HD Laryngoscope | 70°, 4.0mm, 185mm | 0        | 0   |



## Cart

|                        |                      |
|------------------------|----------------------|
| Dimensions (W x D x H) | 328 x 365 x 1,200 mm |
| Weight                 | 40kg                 |



## ENT Chair NET-1500



NET-1500A



NET-1500D



NET-1500E

| Model                       | 1500A                      | 1500D                      | 1500E                      |
|-----------------------------|----------------------------|----------------------------|----------------------------|
| Backrest Inclination        | 0~95°                      | 0~95°                      | 0~60°                      |
| Base Diameter               | 580mm                      | 550mm                      | 550mm                      |
| Seat Elevation Stroke       | 520-820mm                  | 550-850mm                  | 500-800mm                  |
| Rotating Angle              | 360°                       | 360°                       | 360°                       |
| Chair Rotation              | Auto                       | Manual                     | Manual                     |
| Up/Down Adjustment          | Auto                       | Auto                       | Auto                       |
| Forward/Backward Adjustment | Auto                       | Auto                       | Manual                     |
| Auto Return                 | 0                          | 0                          | X                          |
| Headrest Adjustment         | 0                          | 0                          | X                          |
| Armrest Rotation            | 0                          | 0                          | X                          |
| Seat Material               | Artificial Leather         | Artificial Leather         | Artificial Leather         |
| Color                       | Blue                       | Gray                       | Gray                       |
| Voltage, Frequency          | 220V, 60Hz                 | 230V,50/60Hz               | 230V,50/60Hz               |
| Dimension (mm)              | 990(W) X 600(D) X 1,450(H) | 780(W) X 585(D) X 1,180(H) | 780(W) X 585(D) X 1,180(H) |
| Weight                      | 95 kg                      | 90kg                       | 75kg                       |
| Consumption Power           | 545VA                      | 600VA                      | 600VA                      |
| ESL (Cylinder life time)    | 10 years                   | 10 years                   | 10 years                   |
| Foot Switch                 | 0                          | 0                          | 0                          |





**Seoul Office**

5F Flr, CC Bldg. 439, Bongeunsa-ro, Gangnam-gu, Seoul, Korea

**Head Office/Factory**

110-1, Donghwagongdan-ro, Munmak-eup, Wonju-si, Gangwon-do, Korea

**Tel** (+82)2-3662-4493

**Web** [www.megamedical.co.kr](http://www.megamedical.co.kr)

**Email** [overseas@megamedical.co.kr](mailto:overseas@megamedical.co.kr)

Design & Specifications are subject to change without notice.

Copyright © 2020 Mega Medical Co., Ltd. All rights reserved.

**Mega Medical Co., Ltd.**